

Anti-Ly6E hlgG1 Reference Antibody (hu9B12.v12)

Product Information

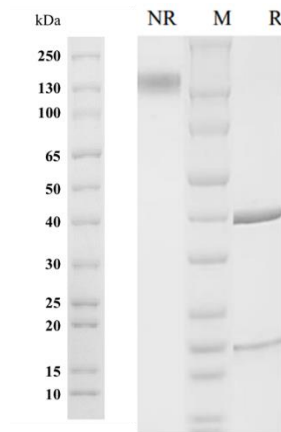
Product Name	Anti-Ly6E hlgG1 Reference Antibody (hu9B12.v12)
Storage temp.	Store at 2-8°C short term (1-2 weeks).Store at $\leq -20^{\circ}\text{C}$ long term. Avoid repeated freeze-thaw.
Catalog# / Size	GM-87981MAB-1mg / 1 mg GM-87981MAB-5mg / 5 mg GM-87981MAB-25mg / 5 mg*5vials GM-87981MAB-50mg / 50 mg GM-87981MAB-100mg / 50 mg*2 vials

Antibody Information

Expression System	CHO
Aggregation	< 5% as determined by SEC-HPLC
Purity	> 95% as determined by SDS-PAGE
Endotoxin	< 1 EU/mg, determined by LAL gel clotting assay
Sterility	0.2 μm Filtered
Target	Ly6E
Clone	hu9B12.v12
Alternative Names	RIG-E, RIGE, SCA-2, SCA2, TSA-1
Source/Isotype	Monoclonal Human IgG1, Kappa
Application	/
Description	The Ly6E gene (Lymphocyte Antigen 6 Complex, Locus E) is a gene expressed in mammalian tissues with important immune functions and belongs to the ubiquitinated antigen family Ly6. Anti-Ly6E antibody immunohistochemistry or immunofluorescence techniques can be used to detect the expression levels of Ly6E in human or animal tissues.
Formulation	phosphate-buffered solution, pH 7.2-7.4.

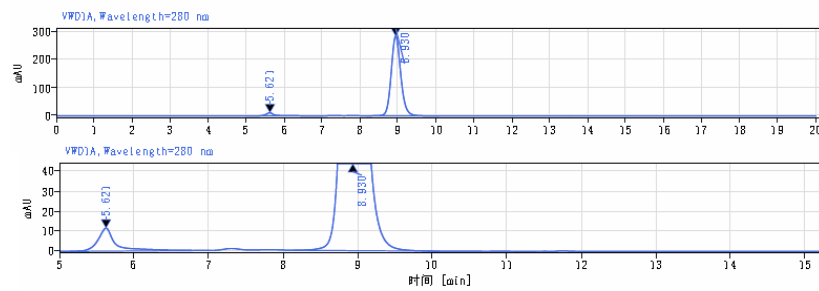
Data Examples

SDS-PAGE



On SDS-PAGE under reducing (R)/non-reducing(N-R) condition. The gel was stained overnight with Coomassie Blue. The purity of the protein is greater than 95%.

SEC-HPLC



The purity of this product is more than 95% verified by SEC-HPLC